

46TH ANNUAL
LLANO FIDDLE FEST
& OPEN FIDDLE CONTEST



MARCH
30 & 31 2024

WWW.LLANOLODGING.COM
WWW.LLANOFIDDLEFEST.COM



LIKE US ON FACEBOOK
@LLANO FIDDLE FEST

TOP REASONS TO JOIN!

FREE WEBPAGE! Your business will be listed on our Chamber Member Directory online.

FREE BUSINESS REFERRALS! The Chamber handles hundreds of calls each month from folks looking for a service or business. We refer our callers and visitors to Chamber members.

FACEBOOK SHARES AND POSTS! We share our member's Facebook Posts to over 5000 Likes and Followers on our Llano Chamber of Commerce Facebook Page

FREE BUSINESS PROMOTION! Bring us your brochures. We proudly display your marketing information for walk-in guests and Internet requests.

FREE MAILING LIST! As part of your membership, to enhance your in-house sales and marketing efforts, we will send you an Excel spreadsheet (at your request) of our member mailing list. This list includes the company name, address and is updated monthly. This list does not include email addresses, phone or fax numbers. (Suggested use: Do a direct mail piece to over 300 members on our mailing list; sort spreadsheet by zip code and target specific markets.)

FREE RIBBON CUTTING AND WELCOME EXPOSURE TO THE COMMUNITY! We feature you as a new member on the chamber marquee at the Historic Llano Courthouse.

MONTHLY CHAMBER BUSINESS-TO-BUSINESS MIXERS! Another opportunity for our members to socialize and network. A different member hosts this evening each month to welcome new, current, and prospective members of our Chamber. This also provides a venue to ask questions and discuss issues with others and the Chamber Board.

Join Today!

AND LAST BUT CERTAINLY NOT LEAST...

The Chamber is your advocate to aid in promoting your business and growing your customer base.

325-247-5354 • www.llanochamber.org 100 Train Station Drive Llano, TX 78643

Llano Chamber of Commerce



Land of Legend & Lure

FREE COMPUTER ACCESS! Did your computer run into a glitch? Special project? The Chamber keeps a computer available for your use. We also have WI-FI available in the Visitor Center.

COMMUNITY CALENDAR! We keep you up-to-date! We keep a Community Calendar online and mail out a monthly Constant Contact update of Chamber goings-on, so you will know what's happening any time.

DISCOUNTED MARQUEE COST! The marquee at the Courthouse Square has proven itself a very valuable advertising tool for our members who can reserve it for half the price of non-members.

COMMUNITY BULLETIN BOARD! Post your job listings, workshops or other happenings for others to see.

100% TEXAS. 100% TEXAN.

From life-changing events to everyday miracles, we're here to help you protect the people, places and things that matter most. For great rates and no-hassle service, contact us for a **FREE 360 Review®** today.

Llano

303 E. State Hwy. 71

Llano, TX

325.247.4161

Kingsland

2249 West RR 1431

Kingsland, TX

325.388.6400



**TEXAS
FARM
BUREAU
INSURANCE®**
AUTO / HOME / LIFE

Welcome to

LLANO
FIDDLE FEST
2024



The organizing committee welcomes you to Llano County, Texas and the Llano Fiddle Fest weekend. We are a 501(c)(3) nonprofit, whose mission is to enrich and preserve the art and history of Texas-style fiddle music and to benefit local charitable organizations.

We would like to thank all our generous business sponsors and volunteers, the City of Llano, the Llano County Commissioners' Court, the Llano Chamber of Commerce and Visitor Center and the many other supporters who make this event possible.

We hope you enjoy your stay in this part of the beautiful Texas Hill Country and we thank you for your support of this festival!

Llano Fiddle Fest Organizing Committee

Tony Guidroz • Marilyn Hale • Claudia Tuckness • Bill Tuckness





Llano National Bank

Here for the Hill Country
There for your financial journey

Welcome Fiddlers!



*Llano
Fiddle Fest 2023*



**Best of luck to
all the competitors**

325-247-5701

www.llanonationalbank.com

NMLS # 407849





2024 Llano 46th Fiddle Fest Schedule of Events

- FRIDAY, March 29th -

Evening: Fiddle Jam Session (exclusive to musicians only)
To participate, contact wildfiddlinbill@yahoo.com

- SATURDAY, March 30th -

9:00 – 9:30 AM: Llano Fiddle Fest Beginners Showcase (all ages)

9:30 AM – 5:00 PM: 46th Llano Open Fiddle Contest – \$2,000 Grand Prize!
FREE to attend, but DONATIONS gratefully accepted!

Location: John L. Kuykendall Event Center,
2200 West Ranch Road 152, Llano

7:30 – 10:30 PM: CONCERT! (doors open at 6:30 PM – limited seating)

Western Swing Legend Jody Nix

VIP Seats: \$30 per ticket

General Admission: \$20 per ticket

Location: John L. Kuykendall Event Center
2200 West Ranch Road 152, Llano

SUNDAY, March 31st -

9:00 – 11:30 AM: Sunday Morning Service

Amazing Grace Fiddles

A little preachin' by Tony Guidroz

Performance by Christopher Melas' Bluegrass Band

Cowboy brunch

*FREE to attend, but DONATIONS gratefully accepted
to benefit the Llano County Historical Museum!*

Location: John L. Kuykendall Event Center
2200 West Ranch Road 152, Llano

- ONGOING -

Come and see the Llano Fiddle History Exhibit at the Llano County Historical Museum, located at 310 Bessemer Avenue in Llano. The exhibit includes our newest donations from the collection of Hugh Farr. Mr. Farr is known as "The Father of Llano Fiddlers," and played with The Sons of The Pioneers.



MIDCOAST HEALTH SYSTEMS

Proud sponsor of the
Llano Fiddle Fest

WELCOME
FIDDLERS!



We're here for you.
200 W Ollie St, Llano, TX
325-216-9199

Fuel, as a 501c3, supports the community of Llano in many ways:

- > FREE drinks to FIRST RESPONDERS
- > Scholarships for Llano High School Seniors
- > Donations to multiple organizations locally
- > Angel Tree, sponsors 100 children each Christmas
- > Anonymous donations to needy families
- > Purchasing items for students in need
- > Coffee donations for community events



In continuous support of
Llano's
Annual Fiddle Fest



sponsored by
**Friends
of Fuel**

106 East Main Street
FUELCOFFEEHOUSE.ORG



BUTTERY COMPANY

~ 1892 ~

Llano Open Fiddle Contest

Saturday, March 30, 2024

Registration begins @ 8:30 AM

Competition begins @ 9:30 AM

Divisions	# Places	Prizes
Youth (up to 15)	ALL	\$75, \$50, \$40, \$30, \$25 Cash prizes / Gifts awarded to all participants
Legends (65 and up)	5	\$250, \$125, \$100, \$75, \$50
Open (all ages)	15	[see below]
Guitar accompanist	5	\$200, \$125, \$80, \$50, \$45

Open Competition Prizes

Grand Champion	\$2,000
1st Runner Up	\$800
2nd Runner Up	\$600
3rd Runner Up	\$400
4th Runner Up	\$200
Places 6 – 10	\$150
Places 11 – 15	\$100



Hill Country

Pet Paradise

Boarding and Day Care

*Mission Statement;
To Provide superior and
Loving Pet Care
Serving our clients like family.*

BOARDING AND DAYCARE SERVICES

**SERVICES: SUITE AND STANDARD
ACCOMMODATIONS,
DAYCARE, AND BATHS**

325-248-6322

1285 HWY 29 W LLANO, TEXAS 78643

hillcountrypetparadise.com

Isaac Carver Memorial Fiddle Award

Isaac, who was known for his big smile and mile-long stories, left us too soon. Isaac had an incredible love of life and lived every moment to the absolute fullest.

Isaac, who frequently arrived to his fiddle lessons in camo and sleeveless

work shirts, was able to catch a flying rooster in mid-air. Isaac loved “living off the land,” and would pack the freezer with his successful hunts. Isaac was a hard worker and enjoyed every ounce of the outdoors. His family roots date back to the original German immigrants who settled in Llano.

Music meant a lot to Isaac, and he played for the sheer enjoyment of the fiddle. Anyone who met Isaac immediately loved him.

Llano dearly misses our friend and we are proud to honor Isaac through this annual Memorial Fiddle Award.



AGAPE HAUS MUSIC STUDIO

screen printing

TOP SHELF

TEES
and embroidery

Offering the Brands You Know and Trust



BELLA+CANVAS.
LOS ANGELES

325-247-2045
800 Bessemer Ave. Suite 1
Llano, Texas 78643

Christopher Melas



Christopher Melas is one of Austin's up-and-coming bluegrass musicians, regularly gracing concert goers with traditionals and originals alike. "He is rising among the ranks of local flatpickers," as noted by the Central Texas Bluegrass Association.

At first glance, you wouldn't expect his route into bluegrass to have been so unusual. As a child, his older brother taught him classical guitar, and in college he studied with renowned classical guitarist Costas Cotsiolis. After winning his first classical guitar competition in 2016, he noticed that his right hand was not feeling normal. He was soon diagnosed with focal dystonia, a rare movement disorder, which ended his career in classical music.

Immediately he knew he needed to find another way to play music, and discovered that he could still hold a guitar pick. Almost without hesitation, he dedicated himself to learning to play the music he loved the most: bluegrass. After a quick transition, he found his home in the bluegrass world, and is a fixture in Austin's bluegrass scene, where he performs on a weekly basis.



KELLER CHIROPRACTIC

**KATHERINE
KELLER, D.C.**

**204 E. Main St.
Llano, TX 78643**

Phone (325)247-2155



PROUD SPONSORS OF

LLANO FIDDLE FEST

FAIN'S

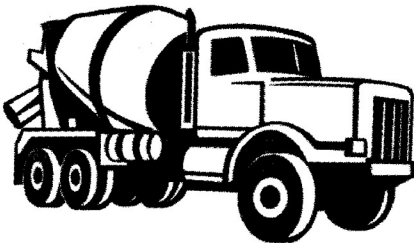
HONEY

14817 E TX HWY 75
Buchanan Dam, TX 78609
512.793.2491
www.fainshoney.com

VARIETAL HONEY • HANDMADE SOAP • CREAMED HONEY
BRUSH FIRE HONEY • BEESWAX CANDLES
• HOME TO PACKSADDLE MEADS •

Mike Methvin Concrete Construction, Inc.



Mike Methvin

Owner

115 Post Oak Drive
Llano, Texas 78643

Home: 325-247-3422
Cel: 325-247-6476

mmethvin50@gmail.com

Fiddle Appreciation at the Llano County Historical Museum

Preserving and interpreting the history of Llano County are among the chief goals of the Llano County Historical Museum, and this includes musical history. Llano County has produced some outstanding fiddlers throughout the years, and a new crop of young fiddlers is in development, as evidenced by the number of young local musicians participating in the Open Fiddle Contest during Llano Fiddle Fest.

Llano Fiddle Fest has partnered with the Llano County Historical Museum for several years to develop a permanent display in the museum,

featuring instruments and biographical sketches of Llano County fiddlers of days past, such as Otis Light, John (JC) Burton, Woodrow Thomas and Eddie McDonald. Also on display are news clippings and memorabilia from past years of Llano Fiddle Fest. In 2022, the collection was honored to add the fiddle of Hugh Farr (1903-1980), who was



Llano County Historical MUSEUM



Hugh Farr's Josef Guarnerius

Fecit Cremonae Anno 1724 IHS Fiddle

born in Llano County and played with The Sons of the Pioneers from the mid-1930s through 1958.

On Sunday morning, museum volunteers will prepare and serve biscuits, sausage gravy, and all the trimmings for a hearty brunch following a brief church service and music by the Christopher Melas Bluegrass Band.

Breakfast is by donation, with proceeds benefitting the Llano

County Historical Museum. Sunday morning's events start at 9:00 AM at the John L. Kuykendall Event Center, located at 2200 West Ranch Road 152 in Llano, and conclude before noon.

The Llano County Historical Museum is located at 310 Bessemer Avenue in Llano. Hours are Wednesday through Saturday, 10:00 AM to 4:00 PM.

- Marilyn Hale



ORDERING
ONLINE
is now available!

We have great
burgers...
And Much Much
MORE

Tues - Sat • 10:30 am - 9:00 pm
Saturday • 10:30 am - 3:00 pm
Closed Sunday & Monday

604 Bessemer Ave • Llano, TX 78643

(325) 247-4660

A Llano Tradition
Since 1965!





STERLING CREEK

— BUILDERS —



Be our next award winning home!



sterlingcreekbuilders.com
325-603-1300



Be an Inspiration

To know where you're headed and help you get there—that's our priority. We take the time to listen and understand your banking needs, applying our expertise to help you achieve financial well-being. That's the kind of attention that inspires confidence.

Cadence Bank is proud to sponsor the Llano Fiddle Fest.



© 2024 Cadence Bank. All Rights Reserved. Member FDIC. Equal Opportunity Lender.



Llano Fiddle Fest

Legends Division: 65+

1st Place	Star McMullen	Corvallis, OR
2nd Place	Brent Young	Anna, TX
3rd Place	Bob Davis	Leakey, TX
4th Place	Linda McArthur	Marble Falls, TX
5th Place	Sandra Darnell	Kingsland, TX

Youth Division: Up to 15

1st Place	McKenna Petersen	Fulshear, TX
2nd Place	Tristan Paskvan	Southlake, TX
3rd Place	Luke Eggert	Killeen, TX
4th Place	Clara Mitchell	Grapevine, TX
5th Place	Luke Moody	San Augustine, TX

Isaac Carver Memorial Fiddle Award

2nd Annual Winner	Violet Hamilton	Burleson, TX
-------------------	-----------------	--------------

Good Luck
to all the
Fiddlers!



Fred
& Cathy
Cook

2023 Contest Winners



Open Division

Grand Champion	Carl Hopkins	Porter, TX
1st Runner Up	Dennis Ludiker	Spokane, WA
2nd Runner Up	Andrew Wilson	Liberty Hill, TX
3rd Runner Up	Marty Elmore	Bowie, TX
4th Runner Up	JayDean Ludiker	Spokane, WA
6th Place	Shira Ellisman	Kingswood, TX
7th Place	Thomas Paskvan	South Lake, TX
8th Place	Aimee Peterson	Fulshear, TX
9th Place	Heide Labensart	Austin, TX
10th Place	Julie Admundson	Hallettsville, TX
11th Place	Eddie Davis	Palestine, TX
12th Place	Zephyr Yellman	Austin, TX
13th Place	Bill Tuckness	Valley Spring, TX
14th Place	Nicolas Siller	Boerne, TX
15th Place	Cara Wilson	Liberty Hill, TX

Accompanist Division

1st Place	Anthony Mature	New Waverly, TX
2nd Place	Hyatt Hopkins	Kingwood, TX
3rd Place	Nick Gillentine	Graham, TX
4th Place	Marty McPherson	Glen Rose, TX
5th Place	Bart Baker	Alvarado, TX

Jody Nix

Jody Nix, a well-established artist in the great State of Texas, gives Glory and Thanks to God for the talent, and the ability to use it to play music that he dearly loves. A true Traditional Country Music and Western Swing artist, he has been in the business for 61 years. He has played dances and shows all over Texas and other parts of the Southwest. He leads one of the finest dance bands in Texas, and they fill the floor on every song.

Jody “grew up” in music, started playing drums in his father Hoyle Nix's band at age 8 in 1960, playing 5 nights a week all over West Texas. Jody started playing fiddle at age 11, started singing at age 16, and recorded with Bob Wills at age 21 on the 1973 album *Bob Wills and His Texas Playboys For The Last Time* as a guest artist, singing 3 songs. He was given the Western Heritage Wrangler Award in 1975 by the National Cowboy Hall of Fame in Oklahoma City for an outstanding contribution to western music for his work on the album; the award was presented to him by Gene Autry. Jody has released 11 albums of his own, and was a guest artist on both of Asleep At The Wheel's *Tribute to Bob Wills* albums. Jody and The Texas Cowboys played for the Black Tie and Boots Ball in 1989 in Washington, D.C., for then-President George H. W. Bush. Jody has played the Bob Wills Day Celebration in Turkey, Texas for 47 years – 10 with his father and 35 on his own, and he played the TCR rodeo dances in Stamford, Texas for 35 years, where in 1986 he set – and still holds – the all-time attendance record. He played for the Big Spring Cowboy Reunion and Rodeo for 21 years, the Post



Stampede Rodeo for 23 years, and worked with the Big Spring Symphony Orchestra in 1990, 1994, 1997 and 2016, and with the Midland-Odessa Symphony Orchestra in 1992. He has been a part of all the Western Swing Festivals in Canton, Texarkana, Snyder, San Angelo and Wichita Falls for over 30 years, and played for the Howard County Fair in Big Spring 24 years in a row. He also played for the Boys Ranch Ball in San Angelo for 19 years and the Western Heritage Classic Ranch Rodeo in Abilene for 15 years. Jody was also a guest artist with Asleep At The Wheel in the original play of *"A Ride With Bob"* in 2005.

In 2008, Jody and the Texas Cowboys represented the state of Texas at the Smithsonian Folklife Festival in Washington, D.C., and also played at the Kennedy Center for the Performing Arts. Jody also played for the PRCA Convention at the South Point Hotel and Casino in Las Vegas, Nevada from 2007–2009, and for the Cowboy Ball at the Pro Rodeo Hall of Fame in Colorado Springs, Colorado. He is a favorite in Branson, Missouri at Silver Dollar City, having performed there for 8 years, and at Willie's Place in Carl's Corner, Texas. He also played at Willie Nelson's 4th of July picnic in 2010 and 2013, the Lincoln County Cowboy Symposium in Ruidoso, New Mexico from 2010–2019, and the Lincoln County Cowboy Christmas Ball. If you listen to XM Satellite Radio, you will hear Jody and the Texas Cowboys on Willie's Roadhouse channel 59, where they are in heavy rotation. This has brought worldwide attention to the band.

In 1996, Jody was inducted into the Western Swing Society Hall of Fame in Sacramento, California. In May 2009, Jody and the Texas Cowboys were inducted into the Texas Western Swing Hall of Fame in San Marcos. In 2013, Jody was inducted into the Northwest Western Swing Music Society Hall of Fame in Washington State. In May 2016, Jody was honored by the Cowtown Society of Western Music and received the Living Hero of Western Swing Award, and in June 2016, Jody was inducted into the Cowboy Hall of Fame at the Heritage Museum in Big Spring. Jody has worked with Bob Wills, Ray Price, Marty Robbins, George Strait, Moe Bandy, Red Steagall, Asleep At The Wheel, Johnny Bush, Frenchie Burke, Tony Booth, The Quebe Sisters, Steve Wariner and many, many others. The band works 100 to 115 dates a year, and consists of Jody Nix: bandleader, fiddle and vocals; Robert Weeks: fiddle and vocals; Jimmy Don Pack: bass; Jim Loessberg: steel guitar and Terry Thompson: drums.

Special Thanks To:

Agape Haus Music Studio, Keenan Fletcher, Llano

Jon Austin: program and website

Blackerby Violin Shop, Austin

Lyle Dixson: videography

Lynda Gammage, Llano

Tony Guidroz: master of ceremonies, preaching

McCauley Herron: photography

Llano Chamber of Commerce and Visitor Center:
ticket sales and support

Llano County 4-H Horse Club: concessions

Llano County Historical Society, Inc.: brunch

Chyna Mason: graphics design

Old Time Fiddlers Association

Westbank String Shop, Austin

Wildflower Dance Studio, Llano

And thanks to all the volunteers
who have donated their time and talents to make
Llano Fiddle Fest 2024 the best it can be.

The event's success is due in large part
to these dedicated friends of Llano Fiddle Fest!



Best Western®

**901 West Young Street
Llano, TX 78643**

(325) 247-4101

www.bestwestern.com/llano

CACTUS LIQUOR

www.cactusliquor.com

325-247-LIQR 5477

Martin and Kelli Tudyk

506 East Young

Llano, Tx 78643



Sandstone Street *Bed & Breakfast and Carriage House*

*"Where
Southern
Hospitality
and Texas
Friendly
Reside"*



Let us
pamper you
during a
weekend stay
or provide a
lovely venue
for your
special event.



508 E. Sandstone St. Llano, TX 78643

www.sandstonestreetbnb.com

325-423-2581



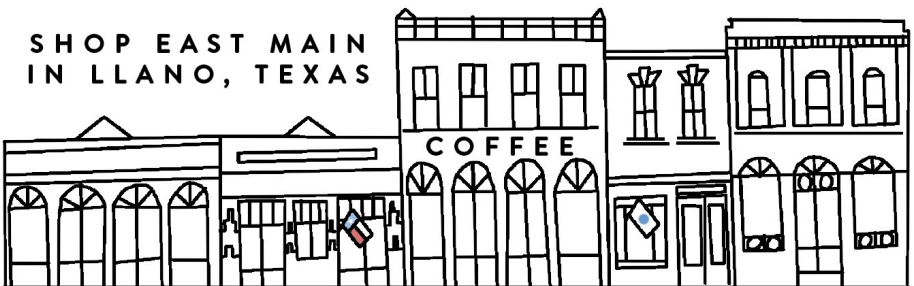
WOMENS + MENS
APPAREL
BOOKS
TEXAS TEES
CANDLES



TEXANA

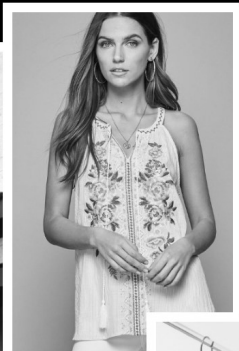
OUTFITTERS

SHOP EAST MAIN
 IN LLANO, TEXAS



TEXANA OUTFITTERS
 110 E. MAIN

LUNA BLUE
 104 E. MAIN



VOLCANO CANDLES BY
CAPRI BLUE
UMGEE APPAREL
JEWELRY
& MORE

Proud Supporters of the Llano Fiddle Contest

Blackerby ★ Violin ★ Shop

North Location

512-469-9343

1111 W. Anderson Lane
Austin, TX 78757

South Location

512-284-8879

3401 W. Slaughter Lane
Austin, TX 78748



Expert Sales and Repair Staff

Artist Level Sales and Rentals

Violin, Viola, Cello, Bass, Classical Guitar



**FIDDLIN'S
IN OUR
BLOOD.**

Miller Electric

325-247-4888

Welcome to Llano,
Fiddlers & Fiddle Fans

Bill & Claudia Tuckness

A-1 TIRE & SERVICE

Diana Winningham

Owner

1208 E State Highway 29
Llano, TX 78643



325-247-5156

24-Hour Service:

325-423-4561

Monday-Friday: 8am-5pm

Saturday: 8am-Noon

Rental • Sales • Repair

**Violin Viola Cello
String Bass**



WESTBANK STRING SHOP

6301 Menchaca Rd

512-326-4898

WestbankStringShop.com

“Serving Austin’s Orchestral community since 1995”

CG

COMMON GROUND

**HOME & COMMERCIAL
SOLUTIONS**

325-248-3325



- **2023 Business of the Year**
Llano Chamber of Commerce
Community Awards
- **Best Thrift & Antiques Store**
2023 & 2024 Best of
Llano County Awards
- **Best Antiques Store**
2021 Picayune
Locals Love Us Awards

possibilities

Resale ♥ Design ♥ Studio

115 E. Main St, Llano
llanopossibilities.com

f @llanopossibilities





JESSE JAMES REAL ESTATE
"RIDE WITH THE JAMES GANG"

**A TRADITION OF TRUST
IN THE TEXAS HILL COUNTRY
FOR OVER 40 YEARS**

**HIGHLAND LAKES
OFFICE**

**TX HILL COUNTRY
OFFICE**

512-793-2851

325-248-0818

WWW.JESSEJAMESREALESTATE.COM

All★Tex Insurance

Joey James

Agency Principal, Independent Agent



Llano

**500-B W. Young
Llano, TX 78643
(325) 247-2246**



**Independent
Insurance
Agents of Texas**

www.all-texins.com  **joey@all-texins.com**

- ✓ Home
- ✓ Liability
- ✓ Commerical
- ✓ Boat
- ✓ Auto
- ✓ Flood
- ✓ Builder's Risk
- ✓ Motorcycle
- ✓ Life
- ✓ Renter's
- ✓ Mobile Home



Fast, easy, worry-free internet.

RELIABLE INTERNET MADE FOR LLANO!

100% Fiber to the Home
Free Installation
No Contracts
Unlimited Data

Llano.BECFiber.com | 325.216.9966



IS A PROUD PLATINUM SPONSOR OF

**LLANO
FIDDLE FEST
2024**



Largest Brewpub in the Hill Country

- In-House Brews
- 52 Beers on tap
- Large Wine Selection

LBC Entertainment

- 7 Big Screen TVs
- Live Music
- Countdown Trivia
- Live Sports HQ

CAJUN DADDY'S DJ SERVICE



- WEDDINGS
- PROMS
- BIRTHDAYS
- CLASS & FAMILY REUNIONS

CALL TONY @ 325-372-1088
OR DEBRA @ 325-372-8344

FACEBOOK/CAJUNDADDYDJ

[HTTPS://TGUIDROZ.WIXSITE.COM/CAJUNDADDYDJ](https://tguidroz.wixsite.com/cajundaddydj)



STEVE'S LIQUOR

BEER WINE SPIRITS

FAMILY OWNED AND OPERATED SINCE 1999

900 W. YOUNG ST

LLANO, TX 78643

(325) 247-1977



Joseph Reuben Johnson
1879 — 1961

My maternal grandfather, Joseph Reuben Johnson, was a fiddle player. He was born in Williamson County, Texas; moved with his parents and siblings to Buffalo Gap in Taylor County; and finally moved to the Valley View community in Mitchell County, where he and my grandmother raised two daughters. Some of his siblings also played musical instruments. I was born too late to hear the family band, and I have a vague memory of hearing my grandfather play the fiddle only once. His daughters arranged for some musicians to come to his home to play for him shortly before his passing. I can only imagine how important music was to him and his brothers and sisters, who experienced the hard work

and hard times that were common to farm families. His fiddle occupies a place of honor in my home. — *Marilyn Hale*

The Country Quilt Shop

For all your quilting needs and inspiration

100 E. Exchange Place
Llano, Texas 78643
(325) 248-0300

Mon - Fri 10:00 am - 5:00 pm
Sat 10:00 am - 3:00 pm

Ann Feller, Owner

thecountryquiltshop@gmail.com
www.quiltshopinthecountry.com



Greg Zimmerman

Llanouplifts23@gmail.com

Enchanted Rocks & Jewelry

"The Llano Uplift Rock Shop"

805 Berry St. - Llano, TX

Enchanted Rocks & Jewelry

805 Berry St

Llano, Texas 78643

325.247.4137

Store Hours

Wednesday - Saturday

11:am - 4:pm

or by Appointment

enchantedrocksandjewelry.com

LLANO, TEXAS

RANCH HOUSE DRY GOODS
and
**BUCKAROO
BLANKETS**

QUILTING FABRIC BLANKETS + PILLOWS
WESTERN FABRIC + TRIMS ★ CUSTOM BEDDING + DECOR

SANDY SULLIVAN

103 EAST MAIN STREET
325.248.6701

**AUTHENTIC GERMAN SAUSAGE
SMOKED IN HOUSE**

FROM TIME-HONORED TO TABLE



**VOTED LLANO'S
BEST GROCERY STORE
2022, 2023, 2024**

Voted by Llano News Readers' Choice Awards



705 W. Young Street Llano, TX 78643 OPEN Mon-Sat 8-7
325-247-4450 www.Miillers.com

WELCOME TO LLANO, TEXAS AND
TO LLANO FIDDLE FEST!
THANK YOU
TO OUR FIDDLERS,
FESTIVAL ATTENDEES,
LLANO COMMUNITY
& BUSINESSES,
CHAMBER OF COMMERCE,
AND TO OUR VOLUNTEERS!
YOUR NEIGHBORS & FRIENDS,
JAMES & LAURI RAMSEY

Llano County Master Gardener

Native Plant Sale

April 20, 2024

8:00 am - *till the plants are gone!*

At the Gazebo on the Llano Courthouse Lawn

Lots of Native Plants and expert help for your garden!

Great Raffle Prize

Heavy Duty Garden Wheelbarrow
filled with all your garden needs.

Drawing will be held April 20 at noon.

Tickets \$5.00 each or 5 for \$20.00



IT'S ALL ABOUT THE MEAT...



604 W Young St, Llano, TX 78643

325-247-5713

For Catering call Lynn at 325-247-5995
or email mailorder@coopersbbq.com

Open every day except Thanksgiving & Christmas




Corner Drug

HealthMart

PHARMACY, GIFT SHOP & MEDICAL EQUIPMENT

**600 BESSEMER AVE
LLANO, TX 78643**

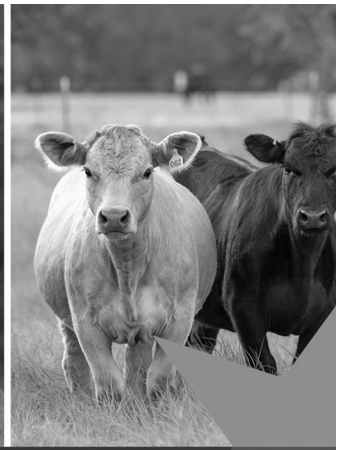
325-247-4155

Find us on 

**CORNER
DRUG
LLANO**



WWW.CORNERDRUGLLANO.COM



JOIN LLANO COUNTY FARM BUREAU

Your membership provides **VALUE + IMPACT**

- Gives you access to over 60 member benefits and services.
- Supports local and state scholarships for high school seniors and enrolled college students.
- Grows educational outreach programs that impact the community.
- Advocates for farmers and ranchers who feed, fuel and clothe America.
- Cultivates conversations and experiences that move agriculture forward.

And Llano County is active in the community!

- Donates to local fire departments.
- Provides scholarships to local youth.
- Participates in the county livestock show.
- Donates to community activities/events.

We want **YOU** to be a Llano County Farm Bureau member!

Join online at texasfarmbureau.org/membership or stop by one of our offices!

LLANO

303 E STATE HIGHWAY 71
LLANO, TX 78643
325.247.4161

KINGSLAND

2249 WEST RR 1431
KINGSLAND, TX 78639
325.388.6400



FARM BUREAU[®]
LLANO COUNTY

The Venable Family would like to wish
this year's competitors good luck
in the competition!



Proudly Serving Llano County since 1975

LANDMASTERS REAL ESTATE

LandmastersTX.com
801 Bessemer in Llano
325-247-5782



Andy Virdell Natalie Virdell Brenda Schneider Rich Houston Mark Virdell John Osbourn Deborah Peck Misty Sledge Kat Thompson
Broker



ARROWHEAD BANK



For a Better Brand of Banking

www.arrowheadbanktexas.com

NMLS# 423091 Member FDIC



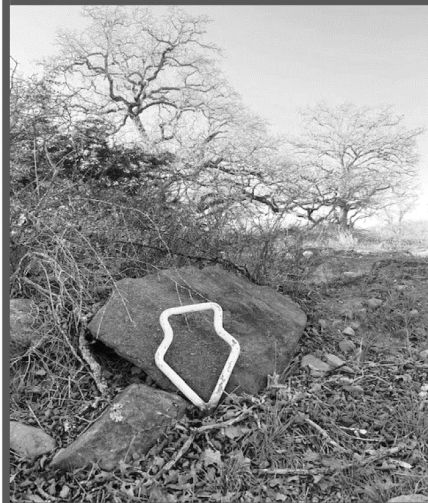
4 locations to Serve you better

**Llano
Main Office**
108 W. Sandstone
Llano,
TX 78643
325-247-5741

**Horseshoe Bay
Branch**
5700 Hwy. 2147 W
Horseshoe Bay,
TX 78657
830-598-7305

**San Saba
Branch**
301 E. Wallace
San Saba,
TX 76877
325-372-5183

**Fredericksburg
Branch**
502 S. Adams
Fredericksburg,
TX 78624
830-990-9300



Thanks to:



• Llano County

• Llano County

Commissioners'
Court

• The City of Llano

• Llano City Council



for



Hotel Occupancy Tax

Grant Funds